

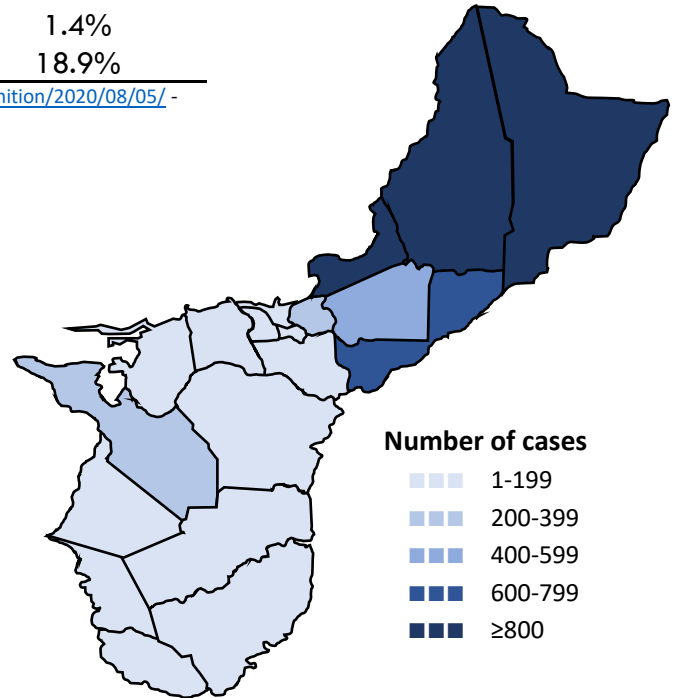


Guam COVID-19 Situation Report - 191

March 12–December 11, 2020

COVID-19 Case Count*	Total	Past 7 days	% Increase
COVID-19 Cases	7,079	120	1.7%
Confirmed cases	6,942	95	1.4%
Probable cases	137	25	18.9%

COVID-19 Cases
Primary Reported Residence



*<https://wwwn.cdc.gov/nndss/conditions/coronavirus-disease-2019-covid-19/case-definition/2020/08/05/> - CSTE/CDC COVID-19 case definition (August 5, 2020)

Summary

As of December 11, 2020, there have been 7,079 cases of COVID-19 reported on Guam. One hundred and twenty (120) new cases of COVID-19 were reported to DPHSS from December 4–December 10: 95 confirmed cases and 25 probable cases. Twenty (20) probable cases received confirmatory laboratory evidence and have been reclassified as confirmed. Two COVID-19 cases were reported deceased since the last situation report, 115 total.

Confirmed cases - past 7 days: 95 cases tested positive by molecular testing - 50 at GPHL (30 molecular test only, 20 confirmatory molecular test for antigen positive cases), 12 at GMHA, 11 at AMC, nine at GRMC, four at Guam Medical Care, three at DLS, two at Guam Radiology Consultants, 1 at DoD, one at One Love Pediatrics and two at an off-island laboratory.

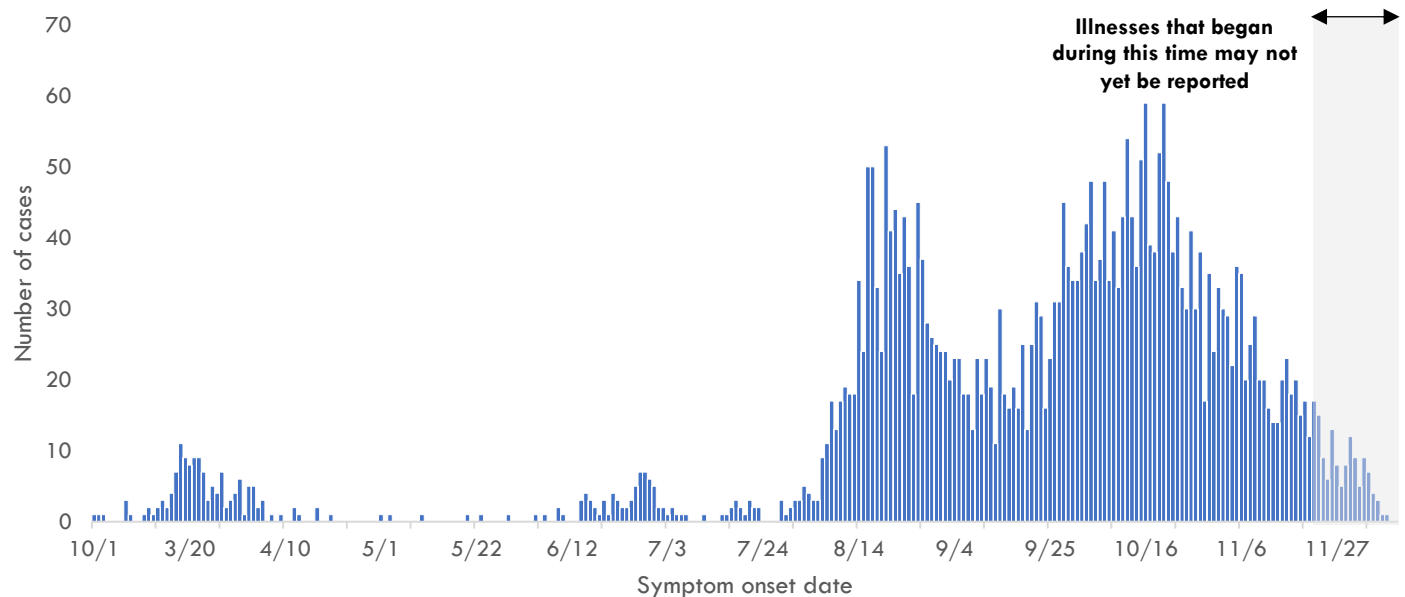
Probable cases - past 7 days: 25 cases tested positive by antigen testing - 23 at GPHL, one at ExpressCare and one at IHP.

Sixty (60) cases were identified through contact tracing. Five cases reported recent travel—five from the US—and were identified in quarantine. Three hundred and fifty-seven (357) cases were reported released from isolation.

COVID-19 Testing on Guam**	Total	Tests reported past 7 days	% pos. past 7 days***
COVID-19 Tests	93,775	4,559	3.2%
Molecular Tests	89,972	3,574	3.2%
Antigen Tests	3,484	893	2.8%
Serology Tests	319	92	26.3%

See COVID-19 Testing Breakdown for all testing definitions. New tests reported reflects the number of tests reported to DPHSS since the previous report and does not necessarily indicate the number of specimens run in the same time frame. *7-day rolling average of positive tests as a percentage of tests

COVID-19 cases by symptom onset date, Guam





Guam COVID-19 Situation Report - 191

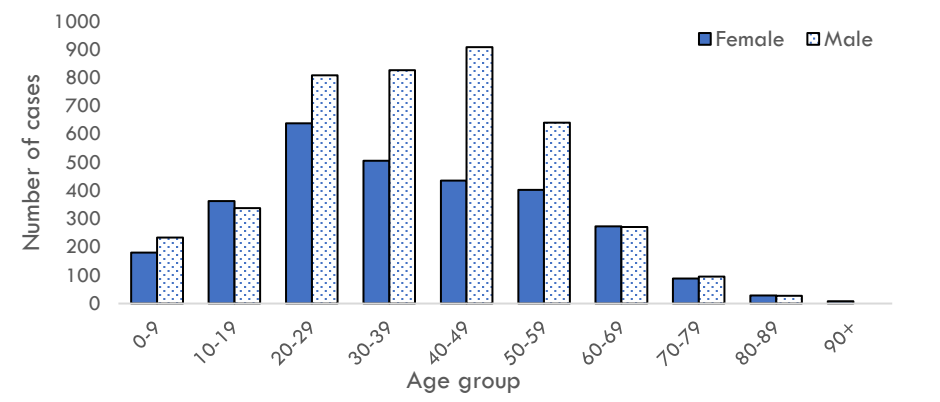
March 12–December 11, 2020

Case Breakdown

Status	Sex	Current isolation location
COVID-19 deaths	Female	Hospital
Cases in active isolation†	Male	Home
Cases not in isolation‡	Age Group	Isolation facility
Civilian	0-9	Military
Military service member	10-19	Epi-Link to COVID-19 case**
Travel History¶	20-29	Household contact
US	30-39	Workplace contact
Dubai	40-49	Community contact
Japan	50-59	Healthcare contact
Mexico	60-69	Residence
Philippines	70-79	North
Singapore	80-89	Central
Identified in quarantine	90+	South
		Homeless
		Non-resident

Note: Data for recent cases are preliminary and are updated based on findings from case investigations. Residence unknown for 273 cases.

COVID-19 cases by age group and sex



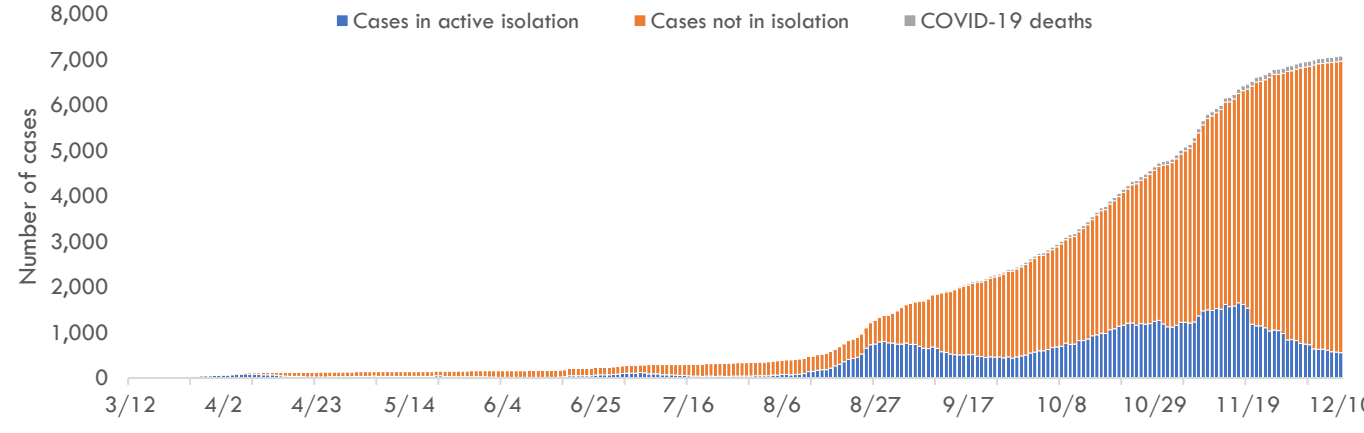
† Cases that test positive for COVID-19 through follow-up molecular testing return to active isolation.

‡ Cases not in isolation indicates the number of COVID-19 cases that are no longer in active isolation based on criteria outlined on page 4. Generally, the criteria assess time since COVID-19 symptom resolution and the date of their most recent positive diagnostic test to qualify for release from isolation.

¶ In the 14 days before symptom onset. Some cases traveled to more than one country.

** Some cases have more than one link to other COVID-19 cases.

Number of cases in active isolation, cases not in isolation, and COVID-19 deaths, Guam





Guam COVID-19 Situation Report - 191

March 12–December 11, 2020

COVID-19 TESTING BREAKDOWN

MOLECULAR TESTS	TOTAL	TOTAL POSITIVES*	NEW TESTS	NEW POSITIVES
Guam Public Health Laboratory	47,441	3,973	1,652	50
Diagnostic Laboratory Services	11,898	974	330	3
Department of Defense	11,145	609	576	1
Guam Memorial Hospital Authority	7,592	428	343	12
Guam Regional Medical City	6,239	348	329	9
Private Clinics**	5,640	564	344	20
Guam National Guard Laboratory	17	0	0	0
ANTIGEN TESTS	TOTAL	TOTAL POSITIVES	NEW TESTS	NEW POSITIVES
Private Clinics***	1,500	137	88	2
Guam Public Health Laboratory	1,984	41	805	23
SEROLOGY TESTS	TOTAL	TOTAL POSITIVES	NEW TESTS	NEW POSITIVES
Diagnostic Laboratory Services	298	16	80	5
Department of Defense	21	1	12	0

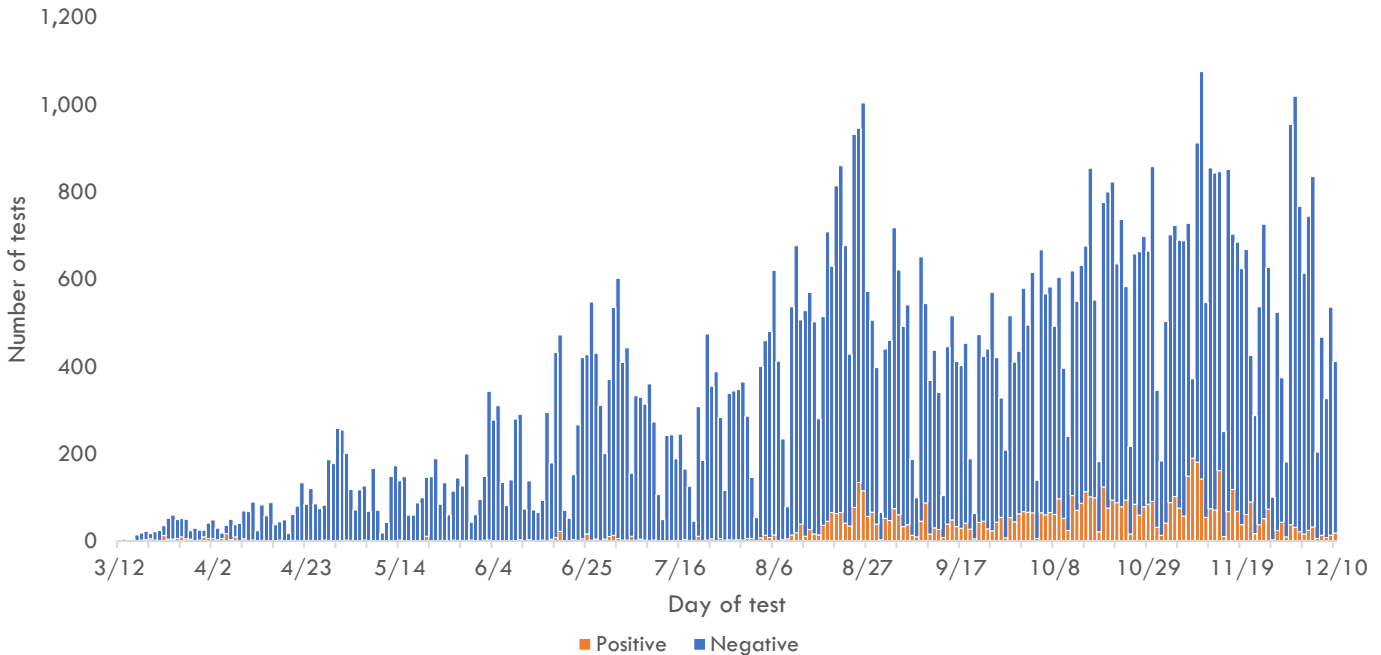
Total tests is defined as the number of specimens with conclusive results. New tests reported today is defined as the total tests reported to DPHSS since the last Situation Report. Percent positive is defined as number of positive specimens, out of all specimens tested. Total positives is defined as the number of positive specimens.

*Five additional confirmed cases tested positive through molecular testing at an out-of-state laboratory.

**Clinics included: American Medical Center, Guam Medical Care, Guam Radiology Consultants, and One Love Pediatrics.

***Clinics included: American Medical Center, Central Medical Clinic, ExpressCare, IHP Medical Group and Guam Medical Care.

COVID-19 testing by day of test, Guam



CONTACT INVESTIGATIONS	TOTAL	PAST 7 DAYS
Contacts identified by DPHSS	12,068	127
Contacts notified by DPHSS	6,107	128
Contacts tested by DPHSS	4,115	31
Cases identified through contact tracing	2,694	60

Note: Data for recent cases are preliminary and are updated based on findings from case investigations.

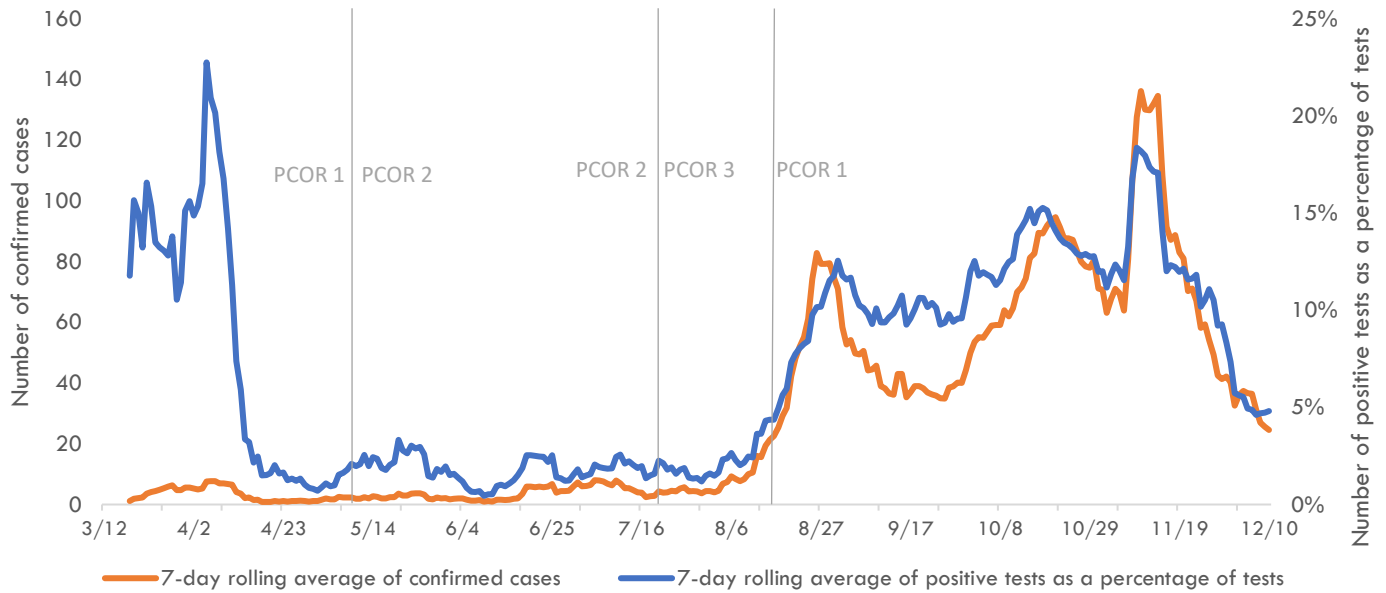


Guam COVID-19 Situation Report - 191

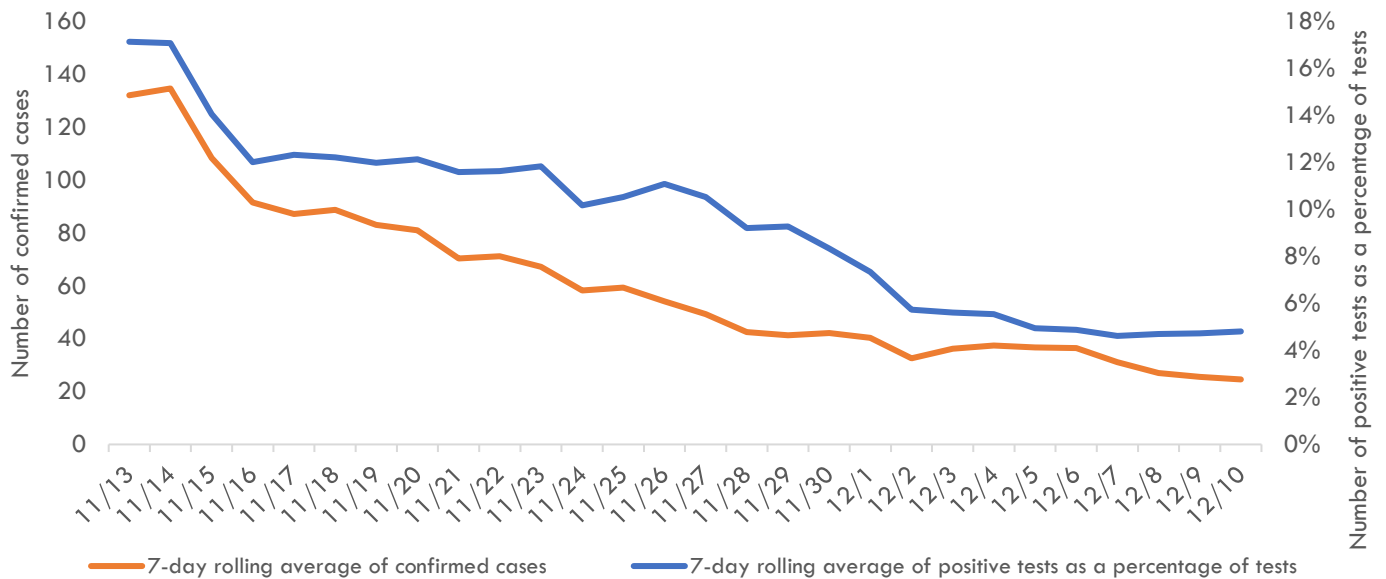
March 12–December 11, 2020

Pandemic Condition of Readiness Assessment

Triggers for PCOR - Cases, March 12–December 10, 2020



Triggers for PCOR - Cases, Previous 28 days



† Criteria for release from isolation

For persons with mild to moderate illness who are not severely immunocompromised:

For persons having symptoms: At least 3 days have passed since recovery defined as resolution of fever without the use of fever-reducing medications and improvement in respiratory symptoms (e.g., cough, shortness of breath) and any other symptoms attributed to COVID-19 AND at least 10 days have passed since symptoms first appeared—or since recurrent symptoms appeared—AND at least 10 days have passed since the date of their first (or most recent) positive COVID-19 diagnostic test.

For persons without symptoms: At least 10 days have passed since the date of their first (or most recent) positive COVID-19 diagnostic test assuming they have not subsequently developed symptoms since their positive test.

For persons with severe to critical illness or who are severely immunocompromised:

For persons having symptoms: At least 10 days have passed since symptoms first appeared, up to 20 days.

For persons without symptoms: At least 10 days have passed since the date of their first positive COVID-19 diagnostic test, up to 20 days.